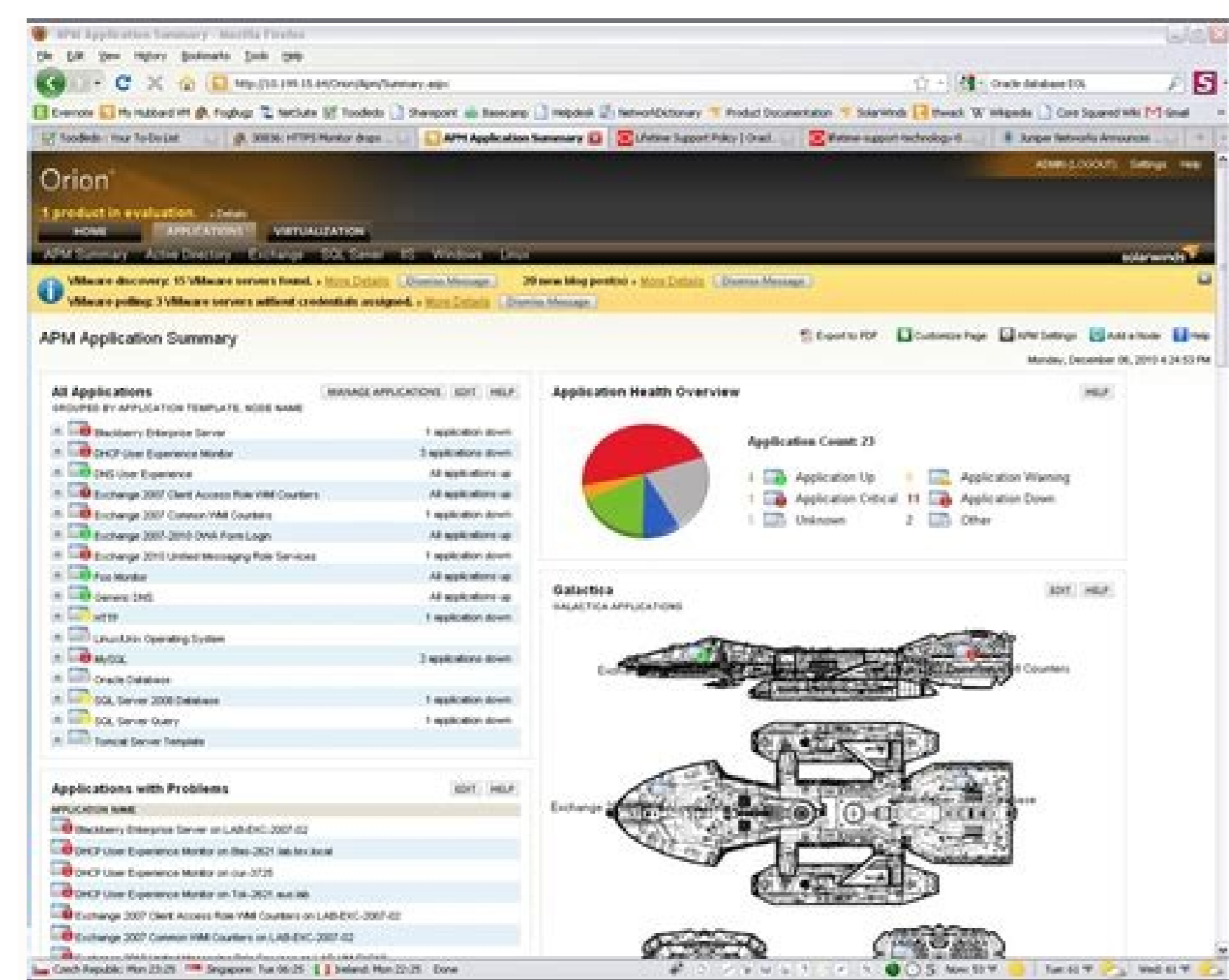


I'm not robot!



Application Score Card



APM2 - Help Manual

THE APM 2 BOARD

The APM 2 board comes from the factory already soldered and ready to have the firmware of your choice loaded by the Mission Planner. "Don't plug it into your computer's USB port yet. We're going to get to that in the next step." This is just an introduction to the board.

The ArduPilot family

ArduPilot	ArduPilot (aka 'Loggy')	ArduPilotMega APM 1 - 1280	ArduPilotMega APM 1 - 2560	ArduPilotMega APM 2
Date of introduction	Q1 2009	Q1 2010	Q1 2011	Q4 2011
Status	Discontinued	Discontinued	Active	Active
Processors	atmega 328, atiny	atmega 1280, atmega 328	atmega 2560, atmega 328	atmega 2560, atmega 328, MPU6050 GMP processor
Onboard sensors	None, External: Thermopiles, acc, optional baro, optional mag	3-axis gym, 3-axis accel, baro, optional mag	3-axis gym, 3-axis accel, baro, optional mag	6-axis MPU6050 (gym+accel), baro, mag, GPS
Datalogging memory	None	2MB	2MB	4MB
Size	30x50x30mm	40x72x20mm	40x72x20mm	40x65x10mm
Assembly required	Lot!	Some soldering	Some soldering	None!

SOLUTION SELECTION GUIDE

Asset Performance Management (APM) 4.0 (Preview Edition)



Introduction

As LNS profiled the market for APM 4.0 technologies it became obvious that some suppliers are building a rich set of capabilities that will address most, although typically not all, of the needed capabilities to support an Industry 4.0 facility. Others are focusing on a narrower spectrum of solutions, some in a single functional area, while others are taking a broader approach with a focus on one or two underlying capabilities.

We segment the vendors as being either platform providers or ecosystem specialist suppliers; in this document we only present those with an ability to serve as an APM 4.0 platform. In a future publication we will address ecosystem providers that deliver advanced-grade APM 4.0 predictive analytics.

As with past solution selection guides, LNS categorizes vendors by their geographic support, industry-specific capabilities, and the typical company size that each most often serves. Unlike previous APM solution selection guides, this edition only describes functionality at a macro level. This allows industrial companies to quickly identify which vendors to investigate further.

Given the rapid pace of product evolution, particularly for Cloud software, specific functions at a micro level can be upgraded and deployed continuously, therefore detailed functional analysis becomes rapidly out of date.

Solution Selection Guide Research Methodology

This solution selection guide helps industrial organizations identify a shortlist of vendors best suited as APM 4.0 platform vendors. For inclusion in the guide, each vendor must demonstrate:

- A compelling combination of successful multi-site and multi-geography implementations across a range of industries;
- Broad and deep functionality;
- A modern technology platform;
- A robust roadmap; and
- Adequate resources and viability to improve the offering into the future.

LNS analysts and research associates prepared this guide collecting data in a variety of ways. Vendors were provided with a detailed questionnaire, which most vendors completed, followed by one or multiple briefings. Analysts also checked references provided by the solution vendors. Other end user references came from LNS Research program members, other consulting clients, or meetings at user group events and other industry events. Prior to publication vendors had the opportunity to verify details for factual accuracy.

LNS Research made every effort to examine all vendors with potential solutions for the specific space. Many vendors are not included in this publication because they do not meet the full qualifying conditions described above. Those excluded might still be a viable option for niche areas of the market;

